



**AL-BANNA AL-BAHRI**

**Marine Services**

**البناء البحري للخدمات البحرية**

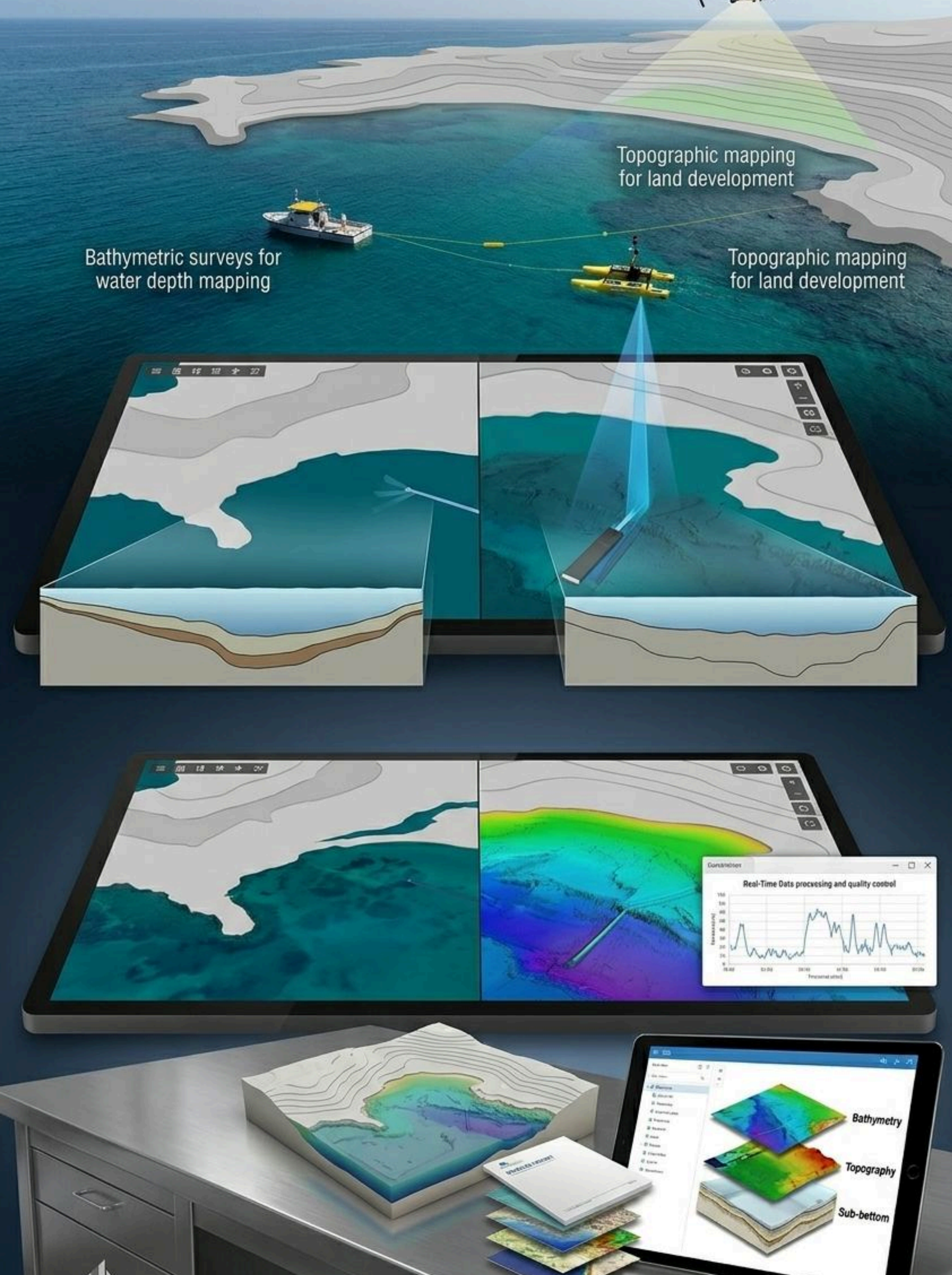
# Welcome to Albanna Albahri

As we continue to expand our role in shaping the future of marine, geophysical, and environmental surveying, our focus remains on delivering solutions that truly make a difference. With decades of combined expertise and a commitment to the highest standards of quality, safety, and environmental responsibility, we have built a reputation for excellence across offshore, nearshore, and onshore projects throughout the Gulf. Our team's dedication, supported by ISO-certified systems and advanced technology, ensures that every project from complex maritime infrastructure to large-scale coastal developments is executed with unmatched accuracy and integrity.

We provide a comprehensive surveying ecosystem: from foundational hydrographic and bathymetric mapping of the seabed to high-precision topographic surveys of complex landscapes. This technical backbone is further enhanced by our cutting-edge Aerial UAV Drone Surveying, which delivers rapid, high-resolution geospatial insights, and our Ground Penetrating Radar (GPR) services, which provide non-intrusive, precise subsurface utility mapping and structural analysis.

Looking ahead, we are investing in smarter systems, stronger capabilities, and deeper partnerships to meet the evolving needs of our clients across the region. Whether supporting complex marine operations, providing critical positioning services, or deploying advanced aerial and subsurface diagnostics, we aim to set new benchmarks in efficiency and innovation. Our promise is to remain a trusted partner, delivering data you can depend on, solutions that add value, and a level of service that reflects our unwavering commitment to excellence in the Gulf and beyond.





# About Us

Albanna Albahri provides specialized marine, geophysical, and environmental surveying services designed to support complex offshore, nearshore, and onshore projects. With a team of highly experienced surveyors, engineers, and technical specialists, we deliver accurate data, dependable insights, and tailored solutions that meet the demands of construction, energy, and marine development sectors. Our operations are supported by advanced positioning systems, integrated technologies, and ISO-certified quality, safety, and environmental standards, ensuring every project is executed with precision and professionalism. Driven by innovation and a commitment to excellence, we continue to build trusted partnerships across the region by delivering results that stand up to the highest industry expectations.

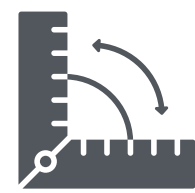
# Structural Excellence

Albanna Albahri delivers comprehensive Marine & construction solutions that support projects from initial planning to final execution across marine, coastal, and land-based environments. Our team combines technical expertise with advanced surveying, engineering, and project-management capabilities to ensure every development is built on accurate data, safe practices, and efficient workflows. Whether supporting large-scale infrastructure, marine construction, dredging operations, or onshore development, we provide reliable services that help clients build with confidence. With a commitment to quality, safety, and timely delivery, we work closely with contractors, consultants, and project owners to meet demanding construction requirements. Our integrated approach backed by precise positioning systems, experienced personnel, and a deep understanding of regional conditions allows us to deliver solutions that enhance productivity, reduce risk, and ensure long-term project success.



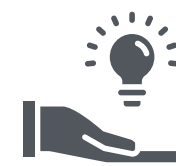
# Our Mission

Our mission is to deliver high-quality marine, geophysical, and survey-support solutions built on precision, innovation, and trust. We combine advanced technology with the expertise of our team to provide reliable data, efficient operations, and services that add real value to every project. Through continuous improvement and a commitment to excellence, we aim to support the region's growth with solutions that are safe, sustainable, and dependable.



## PRECISION FIRST

Delivering accurate data and dependable results every time.



## INNOVATION DRIVEN

Advancing our capabilities through modern tools and smarter systems.



## SAFETY & INTEGRITY

Upholding the highest standards in every operation.



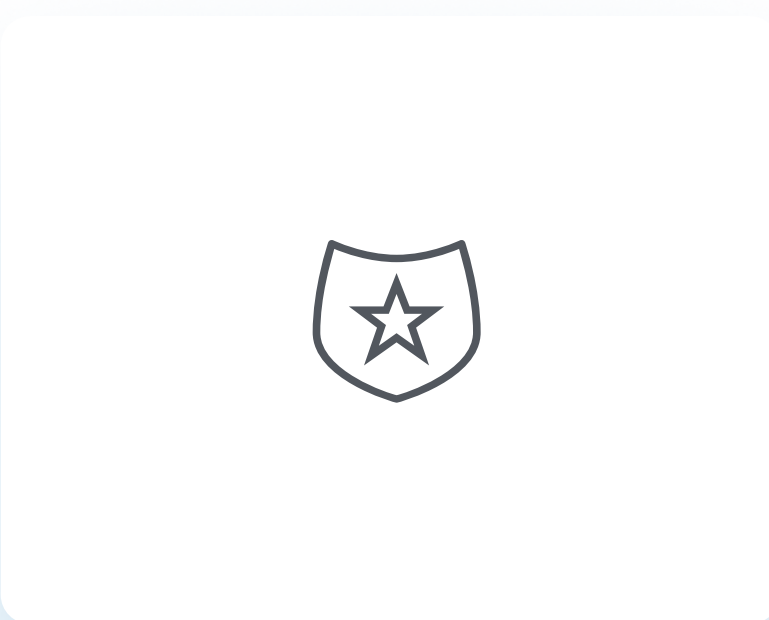
## CLIENT PARTNERSHIP

Building long-term trust through responsive, reliable service.



# Our Vision

Our vision is to lead the region in delivering advanced marine, geophysical, and construction-support solutions that elevate project quality and drive sustainable progress. By embracing innovation, strengthening our capabilities, and investing in our people, we aim to set new standards of reliability, efficiency, and technical excellence across every sector we serve.



### **FUTURE-FOCUSED**

Continuously evolving through innovation and smarter technologies.



### **EXCELLENCE ALWAYS**

Committed to raising standards in quality, safety, and performance.

# Our Process

Our process is built on efficiency, accuracy, and disciplined execution. By combining structured planning, strict safety standards, advanced technology, and continuous quality control, we ensure every project is delivered smoothly, reliably, and to the highest professional standards.



## TIME MANAGEMENT

Structured planning and disciplined scheduling for seamless project flow.



## ADVANCED EQUIPMENT

Modern tools and technologies ensuring reliable, high-performance results.



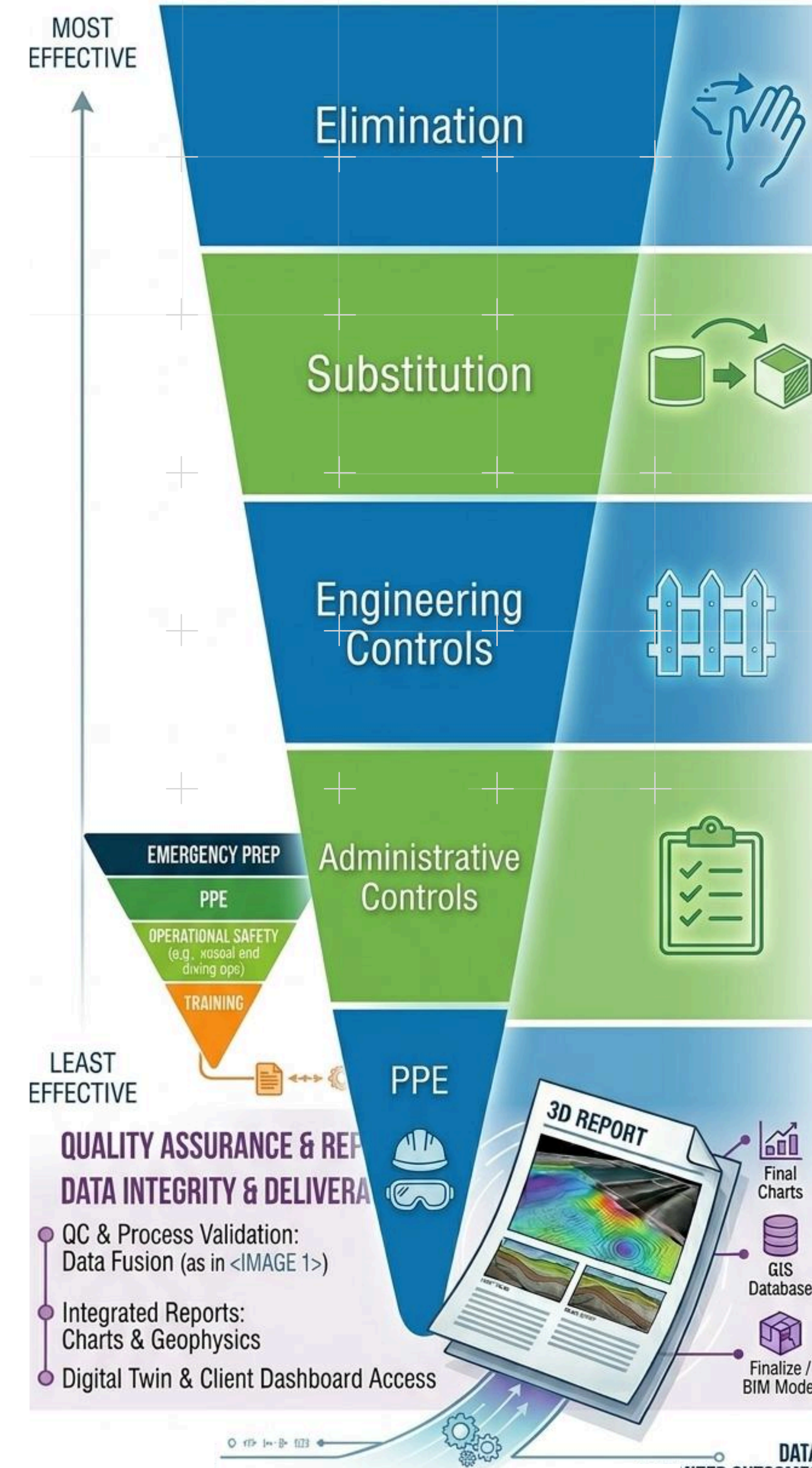
## SAFETY & PRECISION

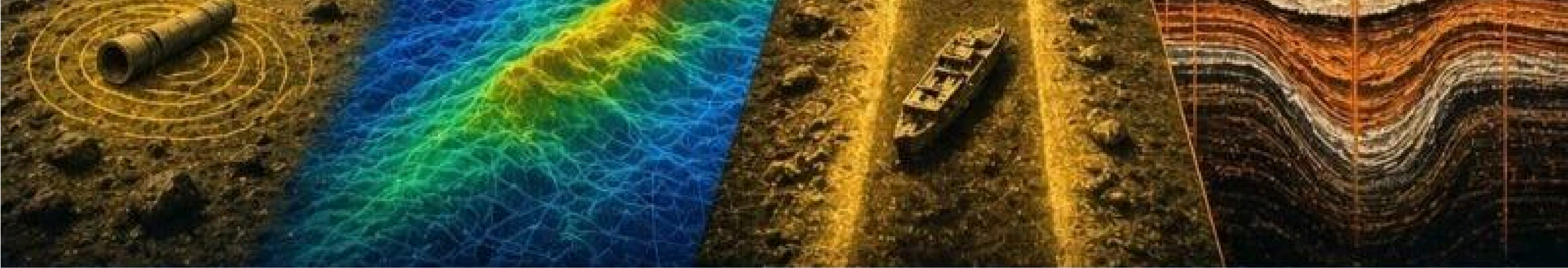
Strict protocols and high-accuracy methods guiding every operation.



## QUALITY ASSURANCE

Continuous checks that keep every stage aligned with industry standards.





## Marine Geophysical Survey [↗](#)

- Multibeam echosounding for detailed bathymetry
- Side-scan sonar for seafloor characterization
- Sub-bottom profiling for sediment analysis
- Magnetometer surveys for pipeline detection
- Current profiling and water column analysis

## Hydrographic & Topographic Survey [↗](#)

- Bathymetric surveys for water depth mapping
- Topographic mapping for land development
- 3D terrain modeling and visualization
- Sub-bottom profiling for underwater structures
- Real-time data processing and quality control
- Detailed reports and GIS deliverables

## Global Positioning Services [↗](#)

- Earthwork and Ground Preparation
- Differential GPS (DGPS) Services
- Precise Point Positioning (PPP)
- Vessel Positioning and Tracking
- Rig Positioning
- Construction Site Control and Monitoring
- Marine Construction

## Machine Control Systems [↗](#)

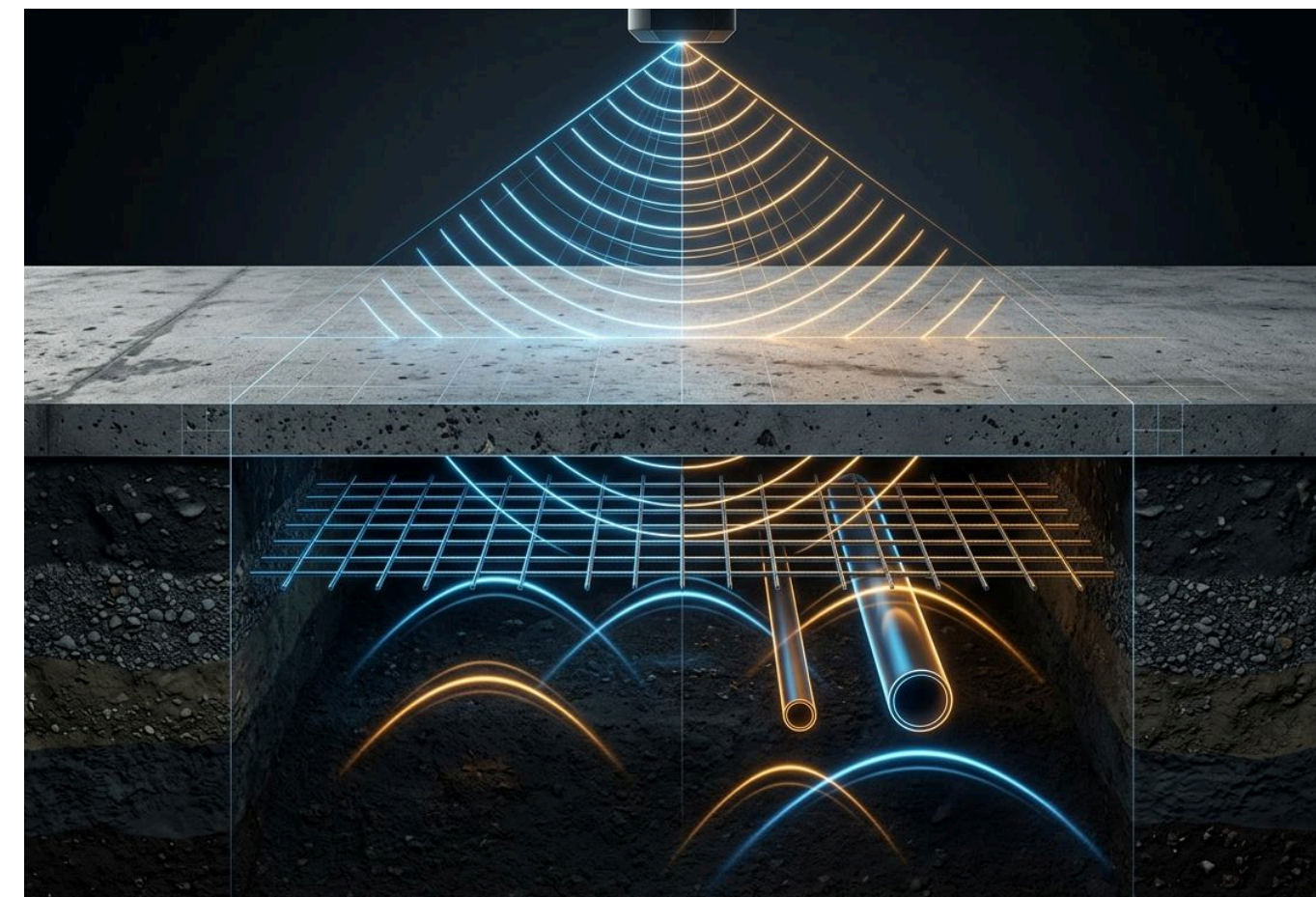
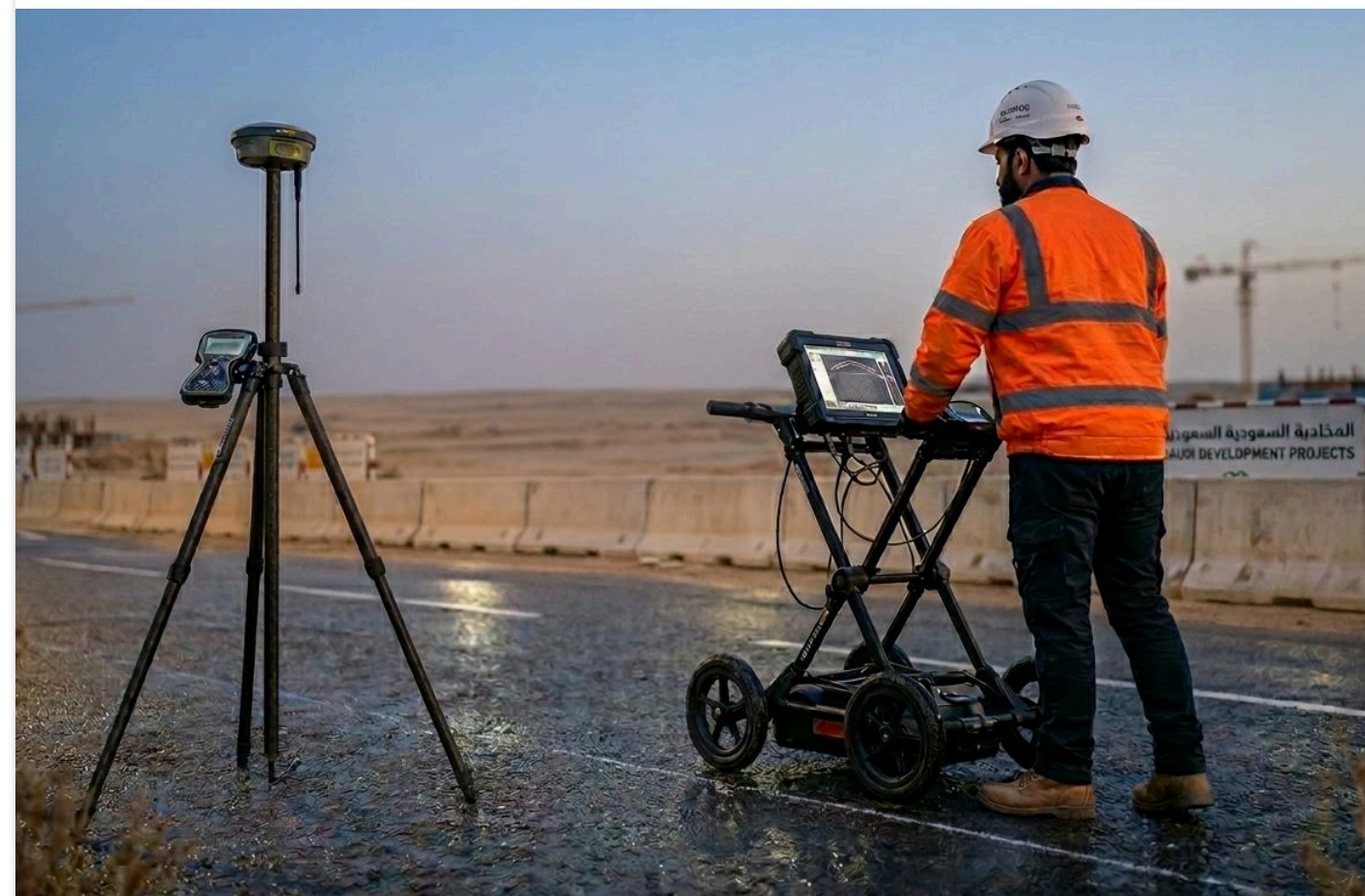
- 3D Machine Guidance Systems
- Automated Grade Control
- Paving and Compaction Control
- Real-Time As-Built Data Collection
- Automated Blade and Bucket Control.

# Services

Specialized offshore support, hydrographic surveying, and coastal infrastructure construction delivered with technical excellence.

## Civil Engineering [↗](#)

- Civil construction
- Infrastructure Construction
- Earthwork Construction
- Road Construction
- Landscape Construction
- Underground facilities

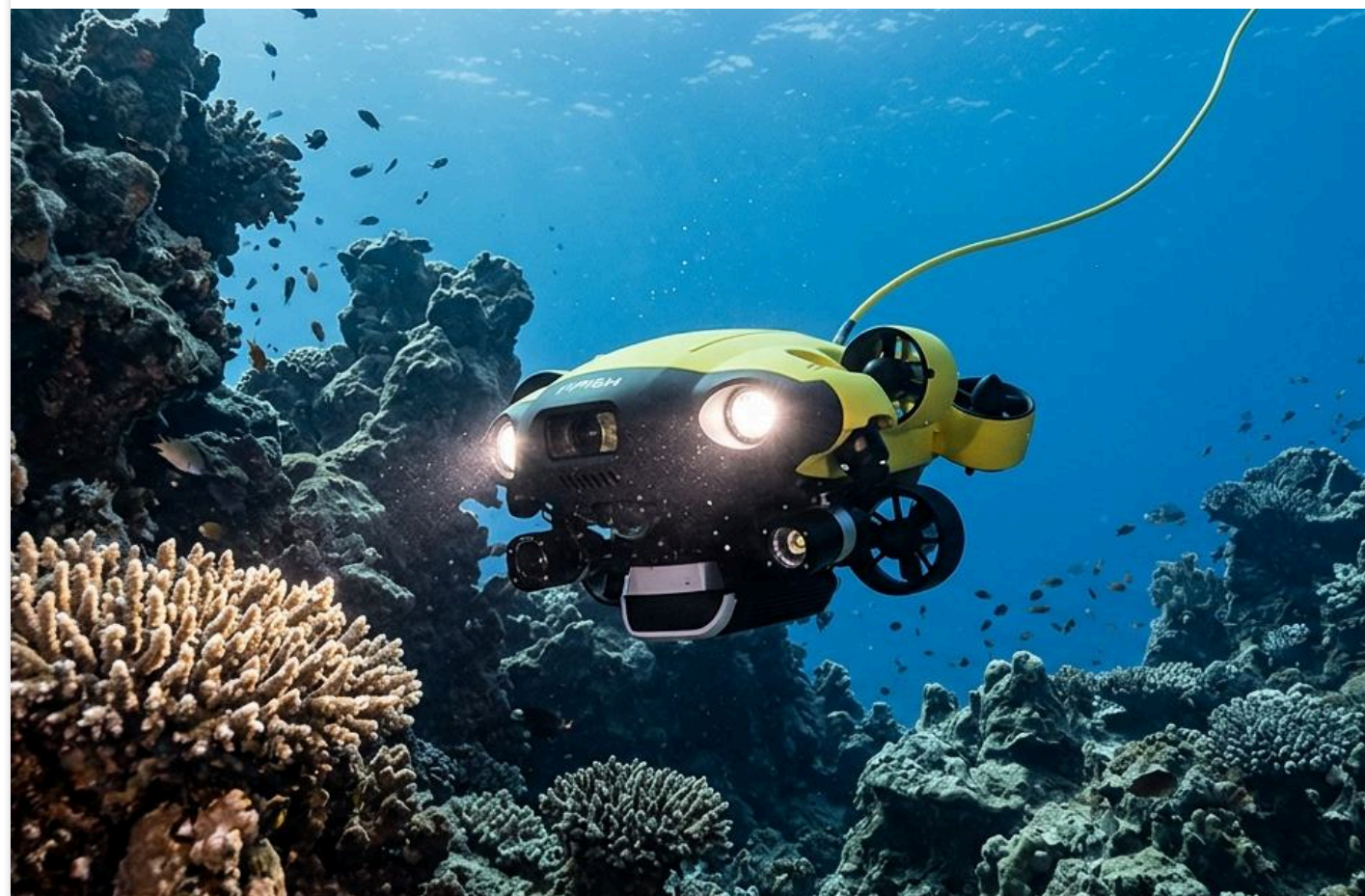
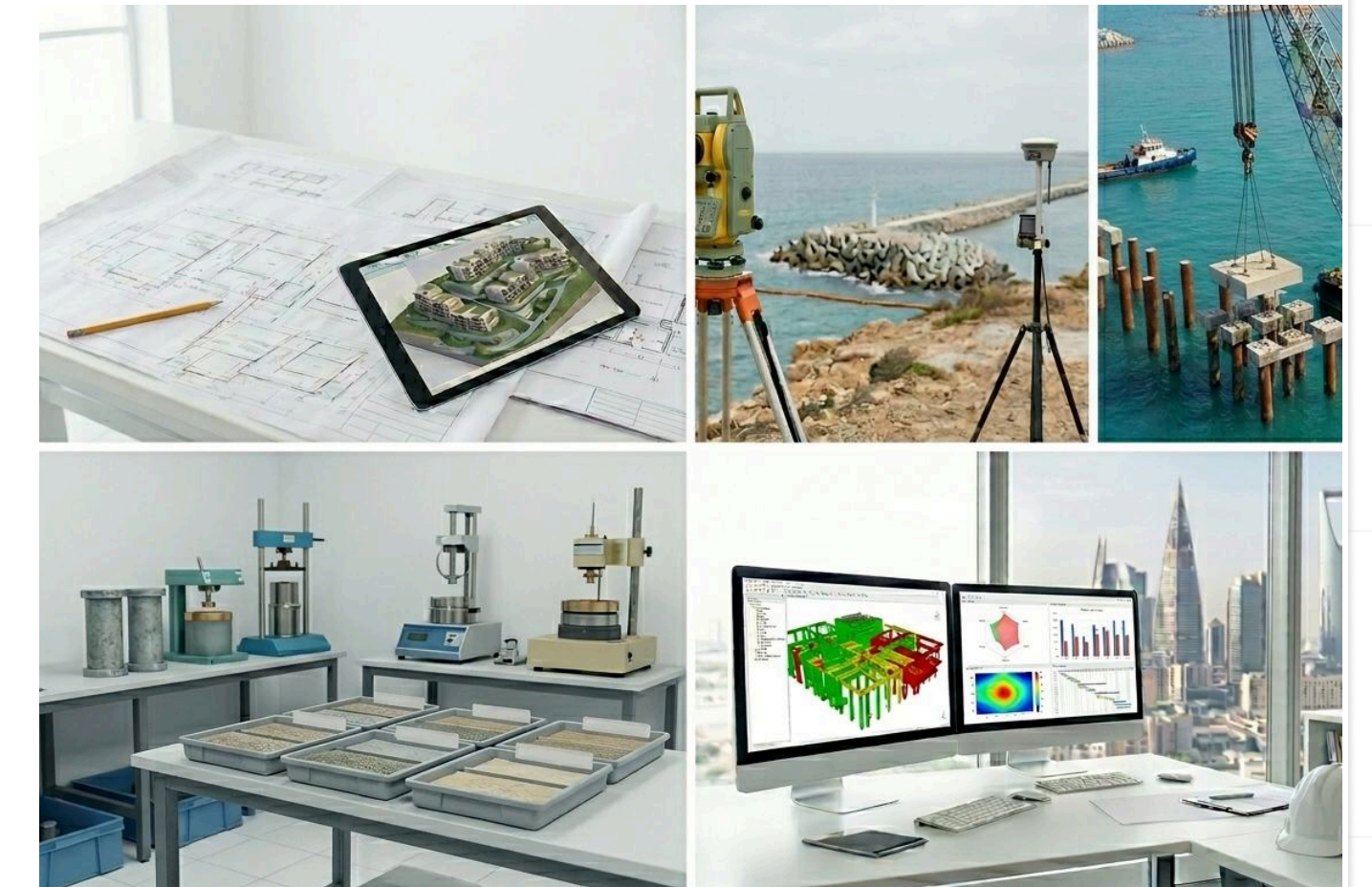
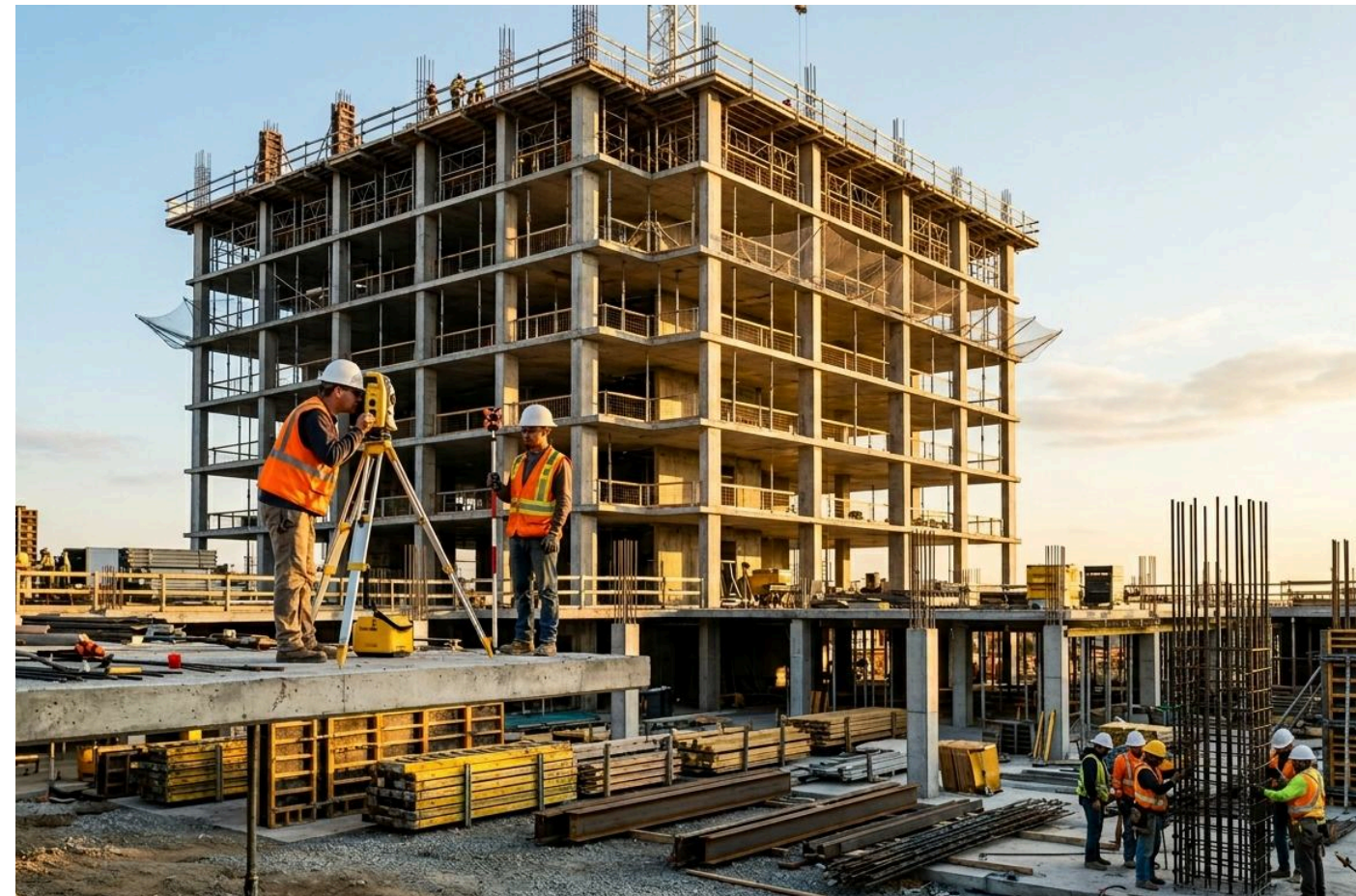


## Ground Positioning Radar [↗](#)

- Subsurface Utility & Infrastructure Mapping
- Multi-Sensor & Geodetic Integration
- High-End Concrete Structural Scanning
- Geotechnical, Void & Cavity Detection
- Advanced Engineering & Transportation Studies
- BIM-Ready Engineering Deliverables

## Construction Services [↗](#)

- Project planning and feasibility studies.
- Coastal and marine construction.
- Port and harbor development.
- Quality control and inspection.
- Project management and supervision.

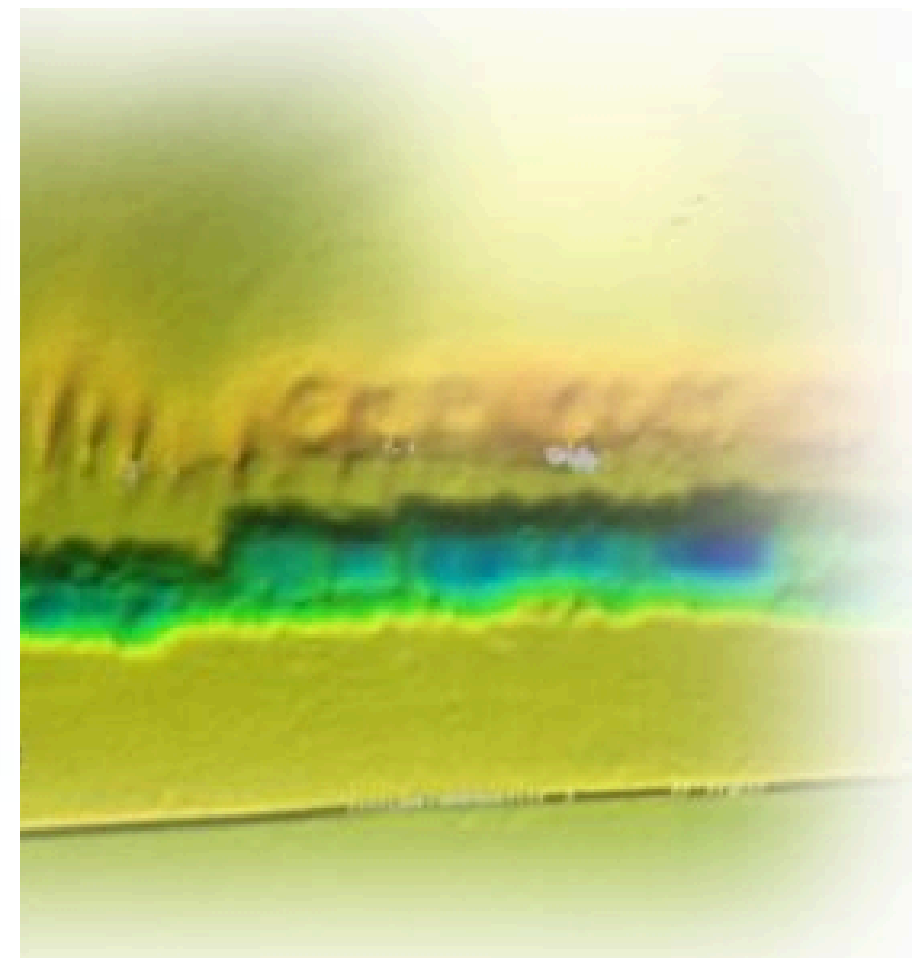
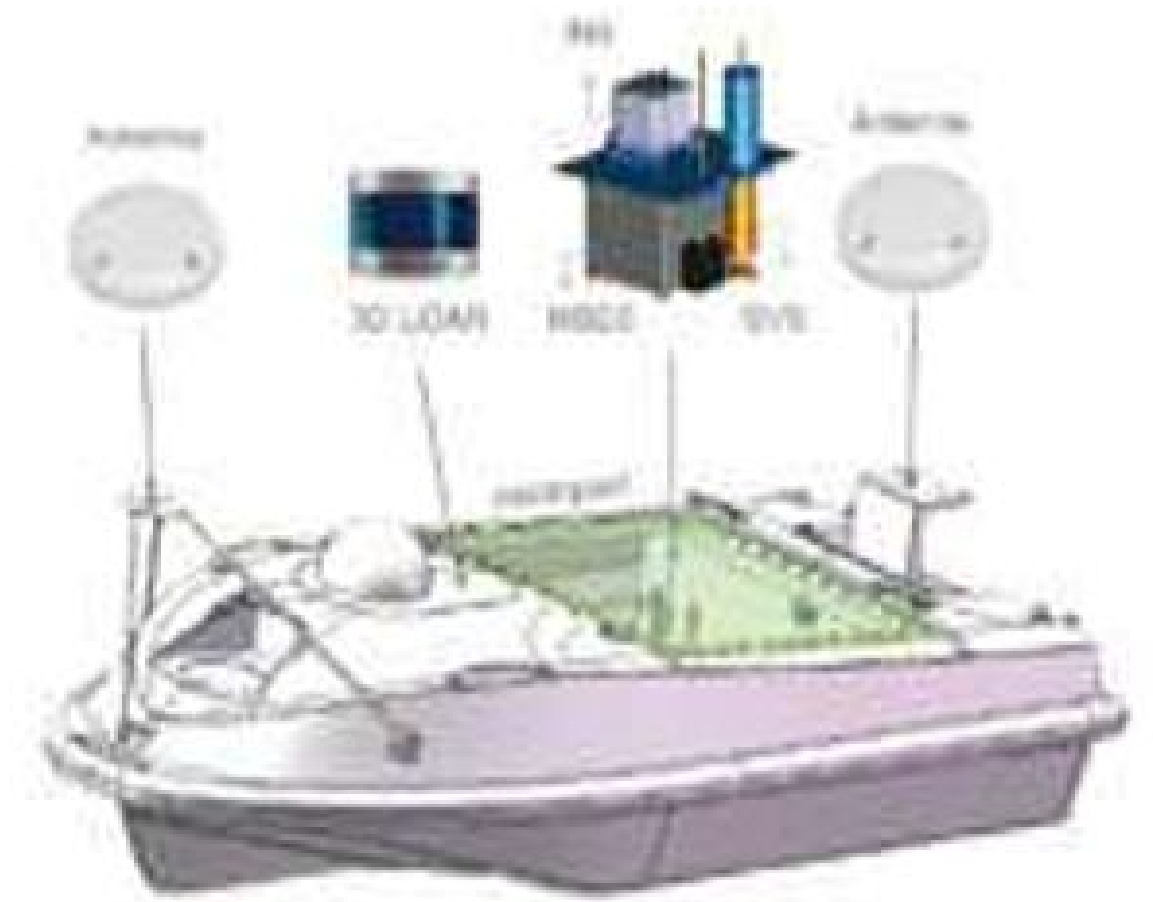


## Drone UAV Surveying [↗](#)

- High-Resolution Orthomosaic Mapping
- Topographic & Volumetric Modeling
- Underwater ROV Visual Inspection for tight areas.
- Drone LiDAR Survey
- Smart City Development
- Safety Violation Monitoring
- Ground Penetrating Radar
- Underground Utility Survey
- Laser Scanning and Digital Twinning

## Hydrographic Survey USV [↗](#)

- Powerful propulsion with maximum speed of 10 Knots.
- Water jet thruster
- Great performance against debris and water power plants.



## Meteorology & Oceanography [↗](#)

Our network provides continuous monitoring of wind, waves, currents, temperature, salinity, and other critical parameters.

- Wave height and period predictions
- Marine weather routing optimization
- Current speed and direction analysis
- Environmental condition reporting
- GPR Detection Device

# Projects



Comprehensive Bathymetric and Topographic Survey

Elmaar marinas LLC Amaala-Triple Bay



LTA-138 42IN Pipeline Replacement.

SAIPEM(ARAMCO) RAS-TANURAH



Magna Cornish Survey.

NEOM MAGNA



Jeddah Port, Coast Guard Port and Approach Channel.

AL MAWANI Jeddah



Tharwa Reclamation Project with NMDC

NMDC-NPCC Dammam



LTA-43 Berri Downstream Project.

SAIPEM(ARAMCO) khursaniya-Abu Ali



Yanbu Power Plant.

SWA Yanbu



Hajar Project-Quraya.

ACWA POWER Quraya



Jeddah Port Survey

MBL Jeddah



Jeddah Cruiser Area Survey.

MBL Jeddah



Naghi Marine

MBL Jeddah



Maaden sulphur plant

Maaden Ras al khair



Swcc water plant survey

SWCC Yanbu



LTA-43 Berri Downstream Project.

Aramco Abu Ali Island



Hajar Project-Quraya.

Quraya



Geophysical and Hydrodynamic Survey

Saudi Arabia



Fiber Optics Cable Laydown Survey.

TRIPLE SSS UMLUJ, Saudi Arabia



CHEC Pipeline survey

ROYAL COMISSION FOR JAZAN AND YANBU JAZAN



Geophysical and Hydrodynamic Survey

Bahrain



Bathymetric Survey for Power Cable Route  
- Amwaj Island

Bahrain



Geophysical Survey for Cable Route - Hawar Island

Bahrain



Geophysical Survey for Cable Route -  
Package 2

Bahrain



Cathy Survey for Mutarit Island

Bahrain



Diyar ul Muharaq Access Channel Survey

Bahrain

# Clients



# Get In Touch

We welcome your inquiries and are available to provide any additional details you may need.



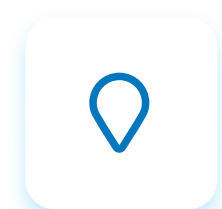
## Email

[info@albannaalbahri.com](mailto:info@albannaalbahri.com)



## Phone

[+966 599 270 801](tel:+966599270801)



## Address

Al Banna Al Bahri for General Contracting Co. P.O. Box:  
35513, 2465 Al-Jubail, Saudi Arabia



# THANK YOU

For More Information and Updates

Visit our Website : [www.albannaalbahri.com](http://www.albannaalbahri.com)



---

## AL-Banna Al-Bahri

PRECISION MAPPING. TECHNICAL EXCELLENCE.

